

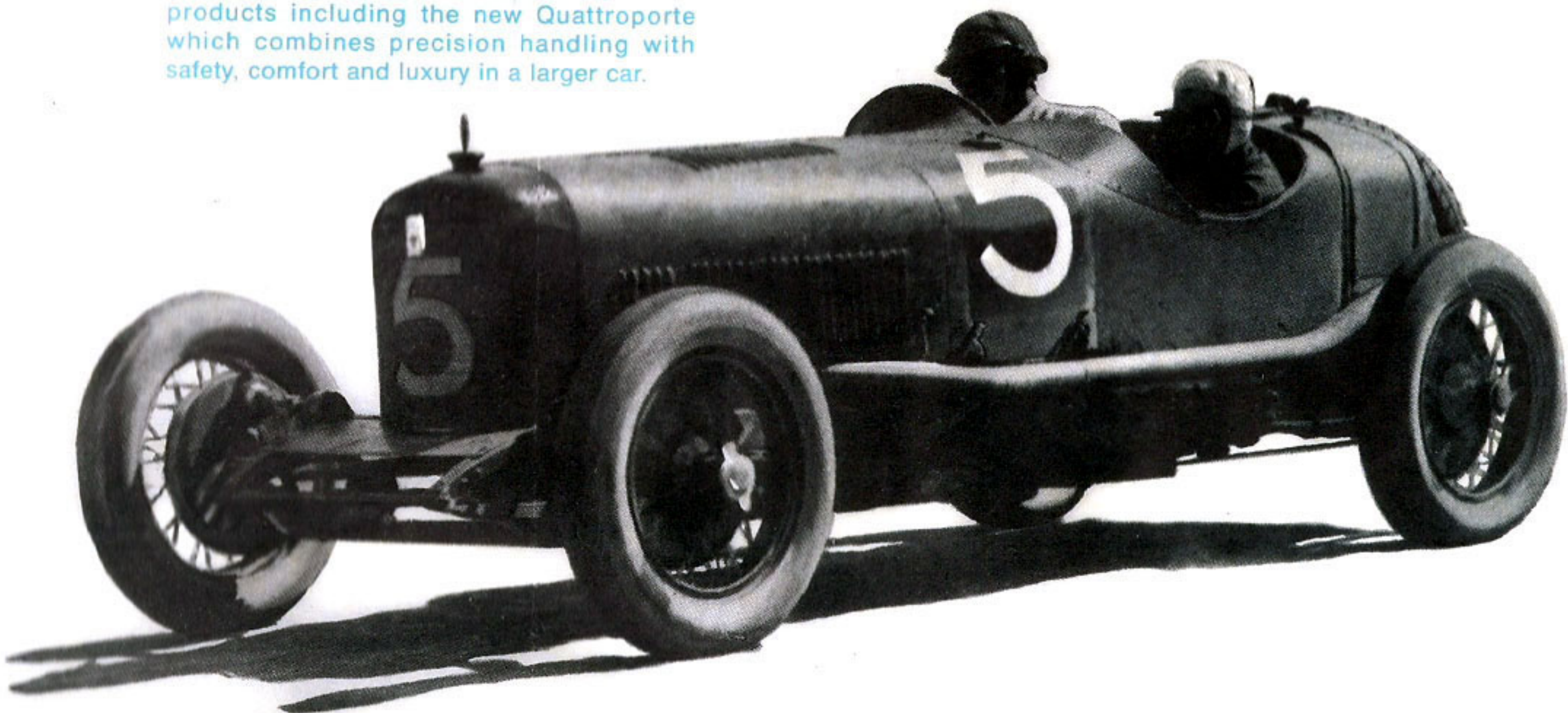


WLANSBIBLIAM

# Maserati

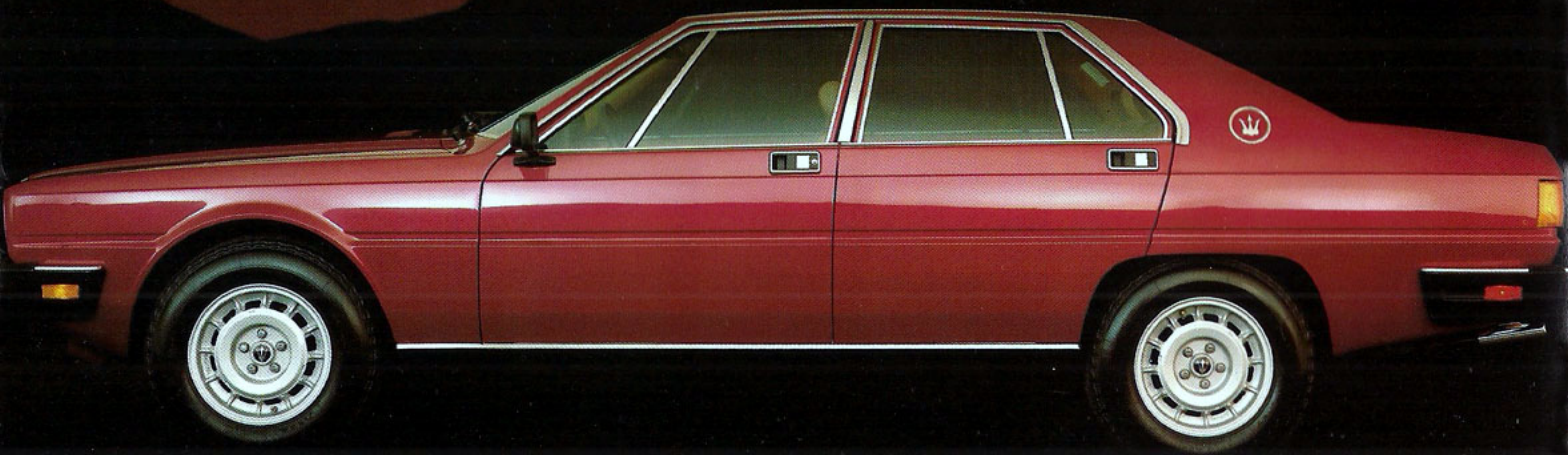
## "YESTERDAY"

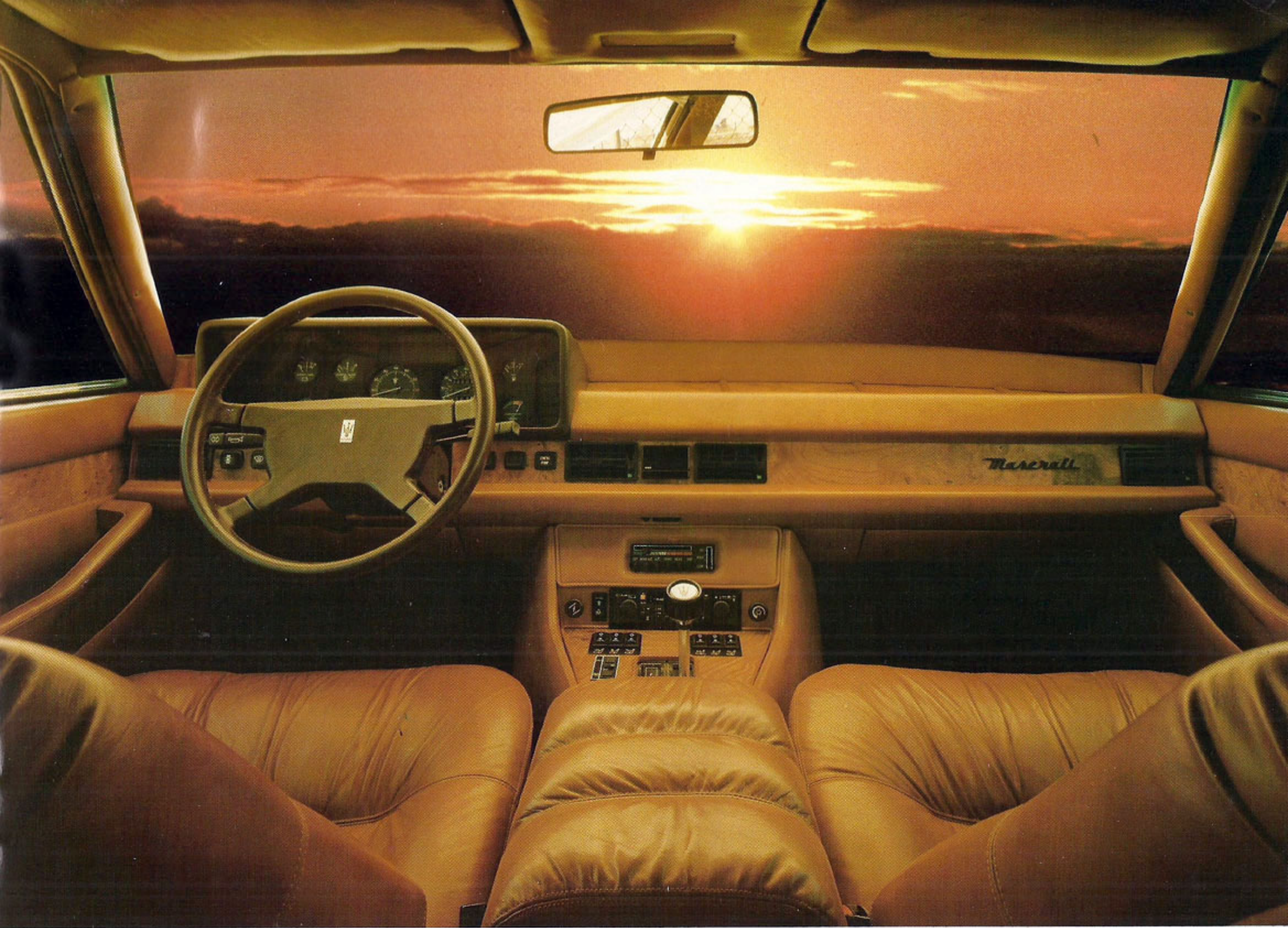
Nuvolari, Varzi, Farina, Fangio, Ascari, Villorresi, Moss, Hawthorn, Surtees, Wilbur Shaw ... all these magnificent drivers played an integral part in the history of "Maserati". Starting in 1926, they were responsible for a string of victories representing World Championships, National Championships, World Hillclimb Championships and two magnificent victories in the Indianapolis 500. These men and their machines together built the legend that is Maserati today. The experience gained from building their high-performance racing cars contributed greatly to Maserati's present products including the new Quattroporte which combines precision handling with safety, comfort and luxury in a larger car.





*Maserati* "TODAY"

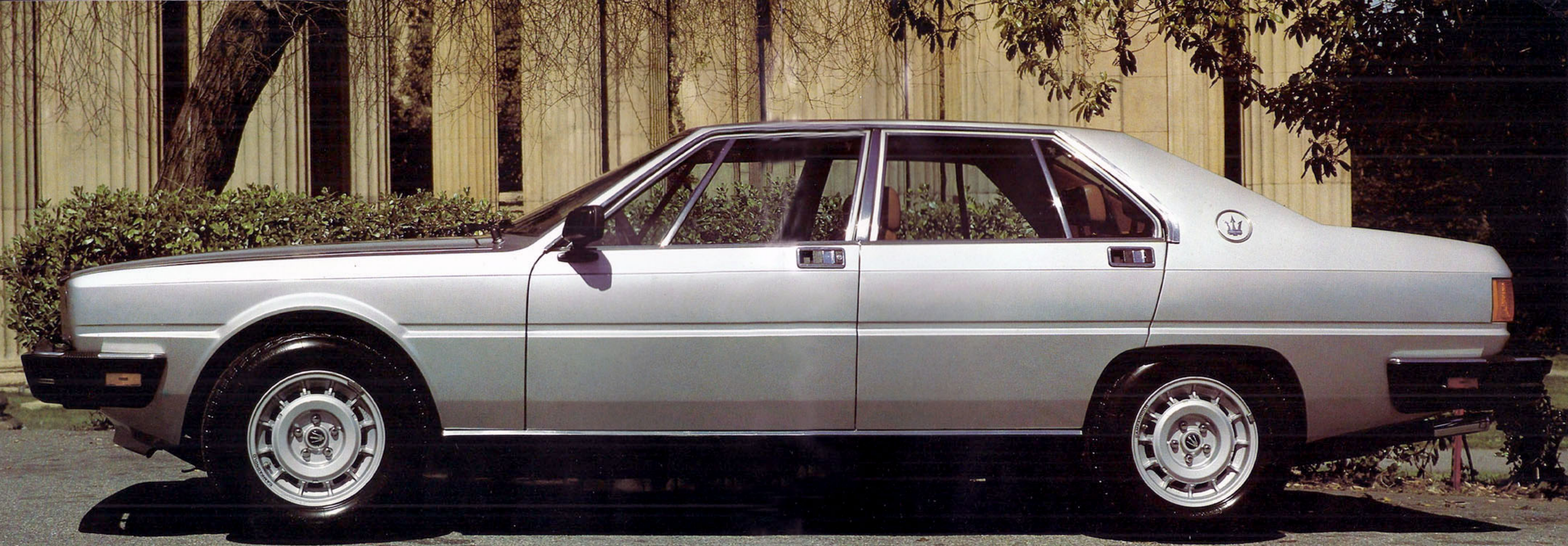




The glove-soft Italian leather used in the Quattroporte and offset by panels of briarwood combine to create the most luxurious

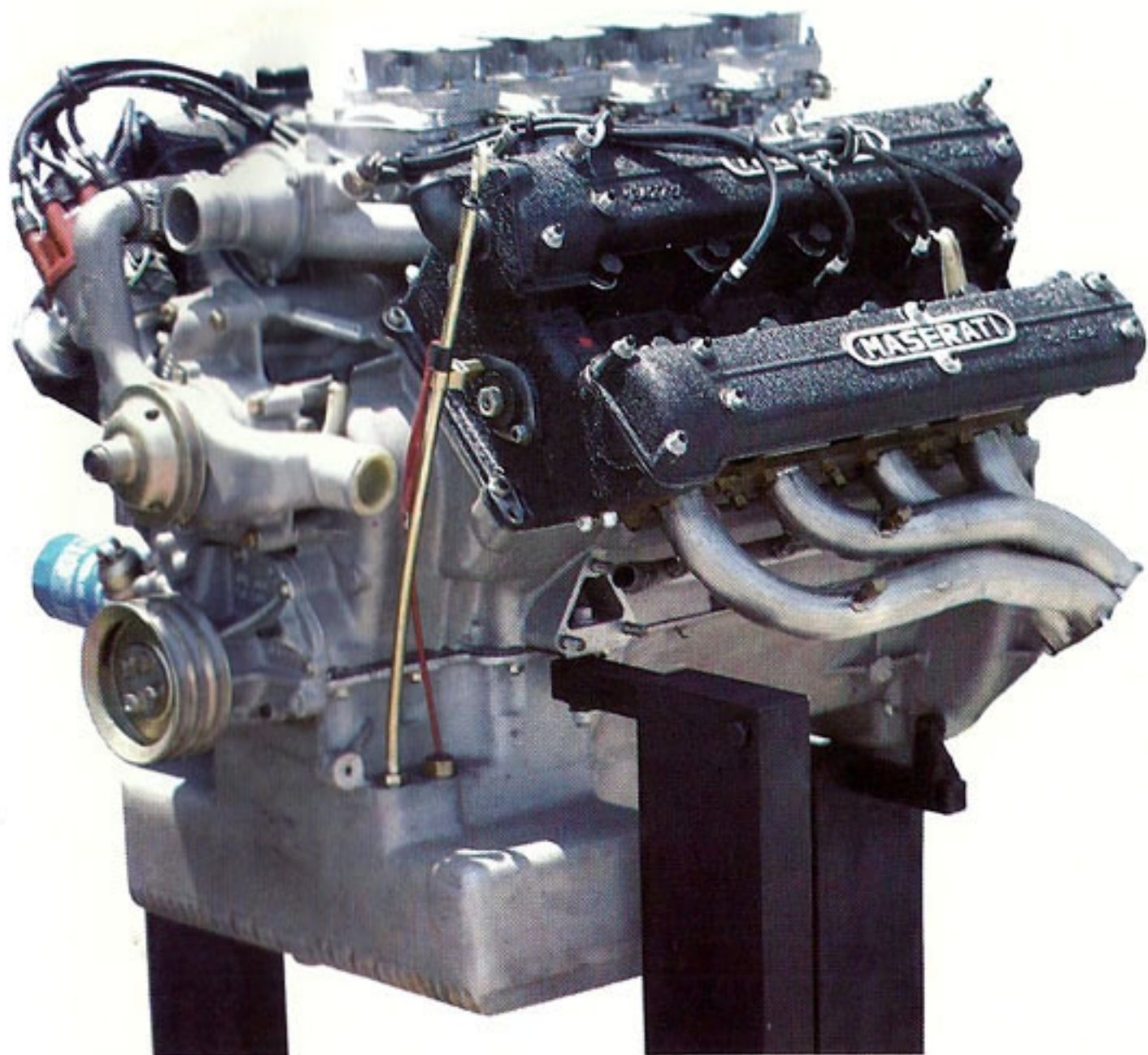


interior imaginable. It is exquisite in detail and as delightful and comfortable as it appears to be.



MASERATI  QUATTROPORTE





The distinctive rear styling makes it both easy to identify and readily noticeable from a safety standpoint.

The beautiful new Quattroporte is a delightful combination of exquisite luxury and sports sedan performance yet it retains the grace and dignity of a large town car. Suspension is all independent with disc brakes, alloy wheels and radial tires which insures the maximum road-holding ability and braking efficiency. The Italian designed coachwork is of exceptional quality and is a tribute to the magnificent history of the Maserati Company.

In addition, all new Quattroportes now have a 2 year unlimited mileage drive-train warranty to complement the regular 12 month/12,000 mile limited warranty.







# TECHNICAL DATA

## ENGINE

Type: V8 90°  
Four Overhead Camshafts Chain Driven  
Displacement: 4930 cc 301 cu. in.  
Bore: 93.9 mm  
Stroke: 89 mm  
Carburetion: 4 Weber 42 DCFN  
Compression Ratio: 8.6 to 1  
Gas Required: Unleaded  
B.H.P. (net): 288 @ 5200 r.p.m.  
Torque (net ft/lbs): 308 @ 3000 r.p.m.

## GENERAL

Catalytic Converter: Two  
Transmission: Automatic  
Ratios: 2.45 1.45 1.00  
Axle Ratio: 3.54  
Tire Size: Front & Rear — 225/70 VR 15

Brakes: Front & Rear — Self centering floating ventilated discs, hydraulically operated with separate circuits for front and rear.

Brake Servo: Vacuum assisted  
Suspension: All around independent with coil springs, telescopic dampers and stabilizing bars.

## DIMENSIONS:

Wheelbase: 110.2"  
Overall Length: 199.6"  
Overall Width: 70.5"

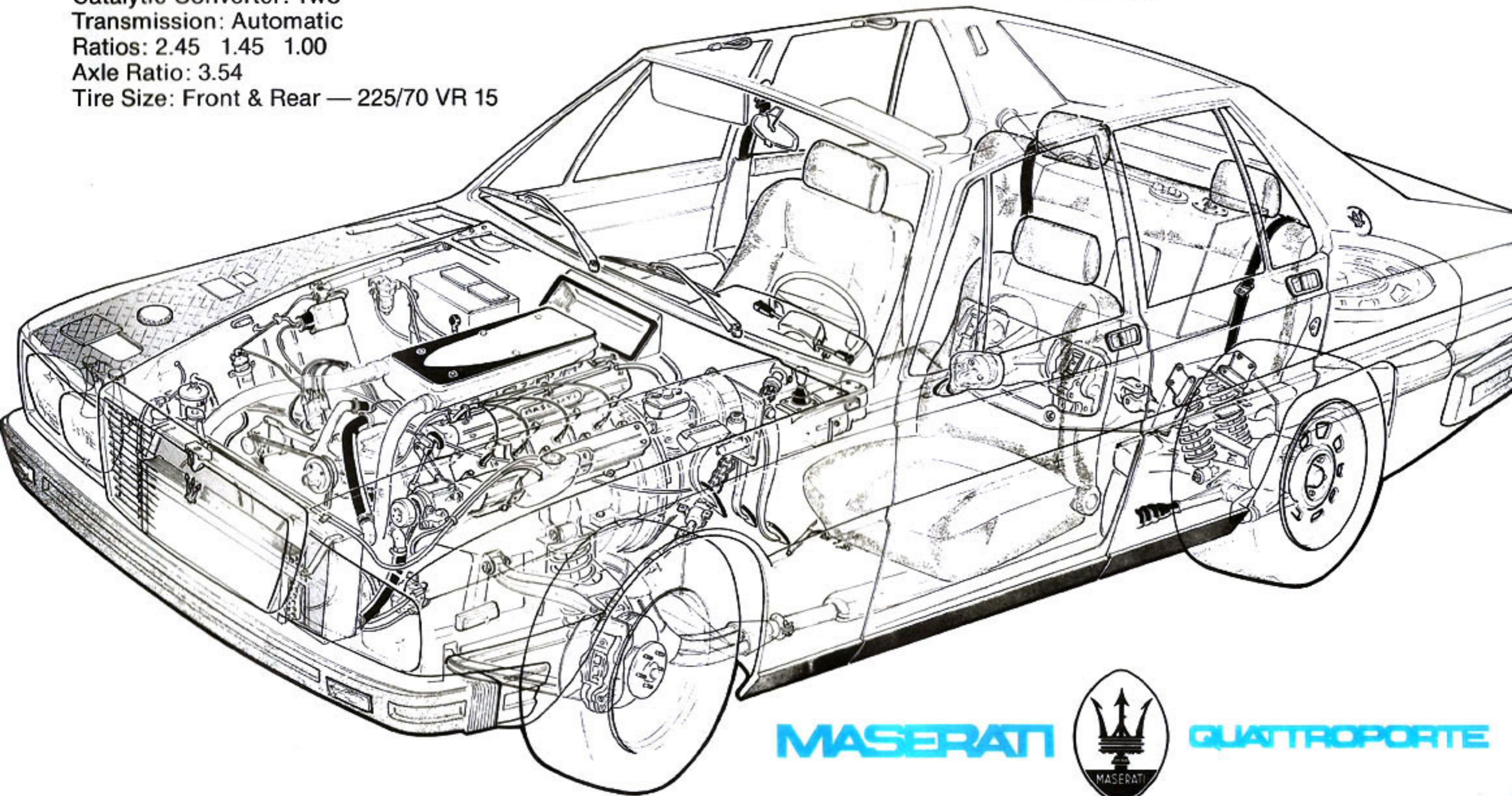
Overall Height: 53.14"  
Front Tread: 60.03"  
Rear Tread: 60.03"  
Headroom (seat to headliner): 33" — 36"  
Turning Circle (diameter): 40'

## CAPACITIES:

Fuel Tank: 28.4 U.S. Gallons  
Cooling System with Heater:  
17.5 U.S. Quarts  
Oil (including filter): 11 U.S. Quarts

## CURB WEIGHT:

4650 lbs.



MASERATI



QUATTROPORTE

